

ALL FOR THE FURNITURE

PRODUCTS - NEWS - CURRENT EVENTS - **MAGAZINE**



Learn about our
ecosystem

Contents

FEATURED PRODUCT

Interactive
Buttons.

Intelligent lighting equipped with sensors and converters, wardrobe enhancements, sliding mechanisms, and a variety of additional features!

NEWS

New releases and forthcoming products for wardrobes and beyond.

INSPIRATION

Draw inspiration from comprehensive environments and product concepts implemented by our clients.

CURRENT EVENTS

We will share our experiences and circumstances during the most severe floods in Spain. We will cover SICAM, one of the year's most eagerly awaited trade fairs, as well as Feria Habitat.



Catalogues



Quartz Accessories

A new collection of wardrobe accessories crafted to elevate functionality, quality, and design.

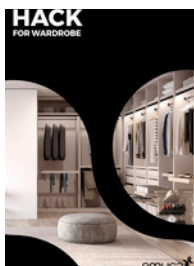
[DOWNLOAD](#)



Lightning

The illumination will not only serve a functional purpose but will also exhibit remarkable intelligence!

[DOWNLOAD](#)



Hack Accessories

Comprehensive insights into wardrobe accessories.

[DOWNLOAD](#)



Placard sliding system

Explore the myriad possibilities present by the Placard sliding door system.

[DOWNLOAD](#)





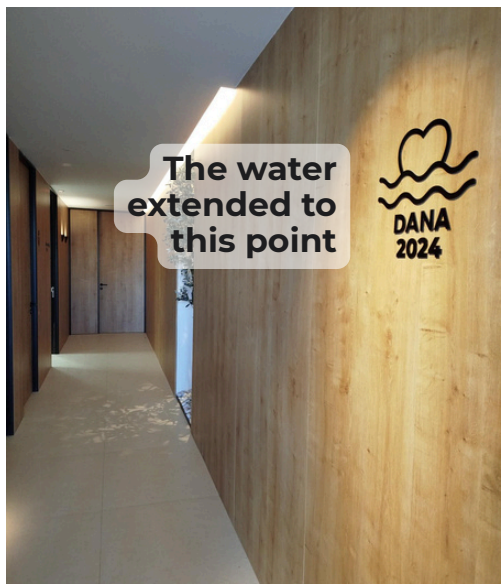
The DANA storm has compelled us to renovate our facilities.

Rather than merely addressing the damage, Emuca has chosen to embrace the challenge as an opportunity to evolve and develop facilities that **embody our identity and the value we aim to provide to our customers.**

Today, we present a fully renovated space, designed as an ecosystem:

- The **Logistics Forest**, our warehouse, serves as the vital hub where our operations flourish and are systematically organized.
- The **Tree Square** serves as a gathering place, with wood symbolizing those who are at the heart of our efforts: the customers.
- The **Greenhouse**, glass-enclosed training spaces where ideas are conceived and cultivated.
- Our **showroom** is where all previously conceived ideas ultimately materialize.

Additionally, numerous other spaces are **crafted to inspire, create, and foster connections.** We invite you to visit us and explore the myriad of services we offer.





In 2026, Emuca solidifies its status as a leader in furniture accessories.

Emuca reaffirms its leadership in the industry through solutions that enhance both functionality and design in kitchens and wardrobes. **The Diamant Meblarstwa 2026 awards serve to validate this recognition.**

The Harmony and Quartz collections have received accolades for their innovation, quality, and capacity to elevate each project into a more practical, aesthetically pleasing, and efficient experience.

[**LEARN MORE**](#)





DIAMENT
meblarstwa
2026

HARMONY

Kitchen accessories

Versatility and quality make them the ideal choice.

Winners of the Diament Meblarstwa 2026 award, they represent the perfect union between design and aesthetics. This range combines a titanium finish with the warmth of elegant wood, creating a complete and coherent collection to furnish any kitchen with style.

[**LEARN MORE**](#)



HARMONY

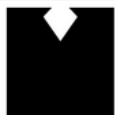
The complete range of accessories for your kitchens

Offer your customers a complete solution for creating functional, well-organized kitchens. With a wide variety of options, from pull-out elements to storage solutions and smart accessories, Harmony allows you to meet every need in the space, providing versatility, aesthetics and that touch of practicality.



VIEW THE ENTIRE RANGE





DIAMENT
meblarstwa
2026

QUARTZ

Wardrobe accessories

[LEARN MORE](#)



The Quartz
collection
**transforms the
interior of the
wardrobe**

Designed to maximise functionality and enhance the user experience. Its removable, durable solutions with clean lines facilitate access, optimise space and add a premium finish to any project. Recognised with the Diament Meblarstwa 2026 award, Quartz stands out for its intelligent design and superior quality.

Surprise your customers with a **complete range**

It is among the most comprehensive options available, featuring accessories to address every requirement. The collection includes racks, side dividers, metal and wire drawer organizers, shoe racks, trouser racks, auxiliary trays, laundry baskets, various combination kits, and a sophisticated pull-out mirror. Each element is crafted to enhance order, functionality, and a refined aesthetic in any project.

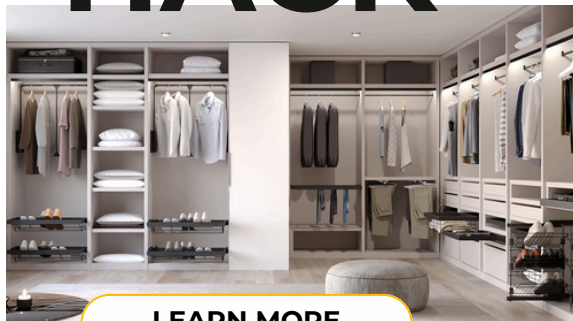
[Discover the full range](#)



HACK

Expanded options for the interior of the wardrobe

Broaden the potential of your wardrobe with accessories in stone gray or black, providing contemporary and versatile combinations. Their partial extension solutions enable you to enhance your project, introducing an additional option to your offerings.



[**LEARN MORE**](#)



**FLEXIBLE
HINGES**

Hinges with **Soft**, quality in every closure

LEARN MORE

Choosing hinges with Soft **is a safe bet for the quality of your furniture.** They provide smoothness, control and impeccable closure, and are designed to offer greater comfort and durability. A solution that elevates your projects and improves the user experience with smooth, silent movement.



The background is a solid teal-green color. Overlaid on this are several large, white, organic, blob-like shapes that vary in size and orientation, creating a dynamic, abstract pattern. The word "NEW" is centered in the middle of the composition, partially overlapping one of the white shapes.

NEW

QUARTZ

Rotating shoe tree

Incredible Quartz rotating shoe rack, an elegant and practical solution for organising your shoes:

- **10 wooden trays** (5 on each side) for large capacity.
- **Smooth 180° rotation** for effortless access to your shoes.
- **Soft-close guides**, comfortable and quiet in everyday use.
- **Height adjustable** to fit different wardrobe spaces.
- Finished in **Titanium**, modern and consistent with the entire Quartz family.
- Includes fittings and screws for easy assembly.

[VIEW MORE](#)



LIGHTNING

Transform spaces with lighting



In our lighting catalogue, you will find endless possibilities to bring your furniture and rooms to life, offering your **customers a 360° experience**. From smart lighting options, with Alexa connectivity or integration with other programmes, to more basic and functional solutions, the range covers all needs with design, versatility and technology at the service of comfort.

[LEARN MORE](#)



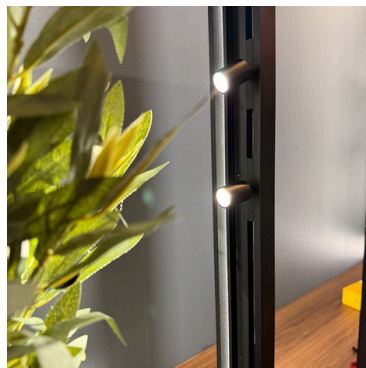
DIWO

Diwo electrified track for LED illumination

[LEARN MORE](#)

The Diwo electrified track redefines the way furniture is lit thanks to a flexible, discreet and efficient system. Its electrified track **operates at 24V DC**, offering safe and **easy installation**, suitable for both homes and commercial spaces.

It is designed to be **combined with Focus, Multidot and Laser luminaires**, which can be freely positioned and adjusted along the profile to adapt the light to any requirement.





Altius Lift

Compass for elevating doors

Advanced solution for lift-up doors in kitchens and homes. Its hingeless mechanism ensures smooth, controlled movement, taking into account both the ergonomics and aesthetics of the cabinet.

- **Soft closing** with force adjustment.
- **Adjustable** opening between 85° and 100°.
- Three-dimensional adjustment for precise installation.
- Compatible with doors **from 250 to 800 mm** and 16–22 mm boards.
- **Quick disassembly** without tools thanks to the clip system.
- Available in four forces, depending on the weight and height of the door.

A modern, versatile solution designed to make everyday life easier.



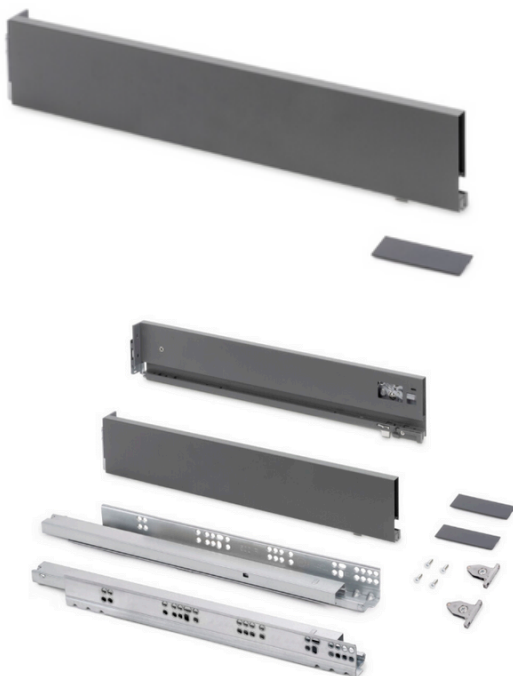
[VIEW MORE](#)



Vertex 3D kit

Includes side rails, soft-close runners, decorative covers and front fixings, all ready for 16 mm boards on the bottom and back. Perfect for those looking for functionality and design in a single system.

[VIEW MORE](#)

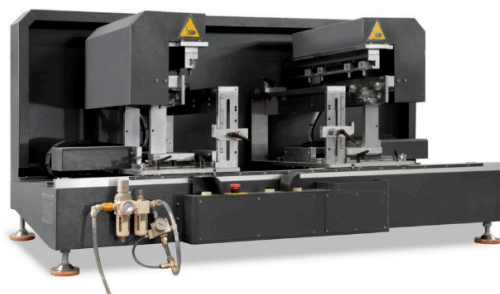


Industrial Packaging Vertex 3D

Ideal for manufacturers, the side rails and guides are supplied in boxes of 20 units, perfect for agile and efficient mass production. **To take automation to the next level, Emuca Tecnotool Max** allows drawers to be assembled in just one minute, offering precision and speed in every cycle. Specially designed for Vertex and Protone systems, it is the ideal solution for those seeking to optimise processes with reliability and high performance.

[VIEW MORE](#)

Tecnotool Max



Sliding system: functionality and style for your wardrobes

The Placard 74 sliding system is designed to improve both the performance and aesthetics of wardrobe doors. **It supports up to 70 kg** per door and offers smooth and stable sliding, with the advantage of the Slowmove brake, which provides more controlled and pleasant opening and closing. In addition, it adapts to different materials and formats, **even allowing several panels to be combined in the same door** to create more personalised and attractive designs.

[LEARN MORE](#)



The background features a vibrant blue field with large, white, organic, and flowing shapes that resemble liquid or smoke. These shapes are interconnected, creating a sense of movement and depth. The word "INSPIRATION" is centered in a bold, black, sans-serif font, standing out against the white and blue background.

INSPIRATION

Inspiration

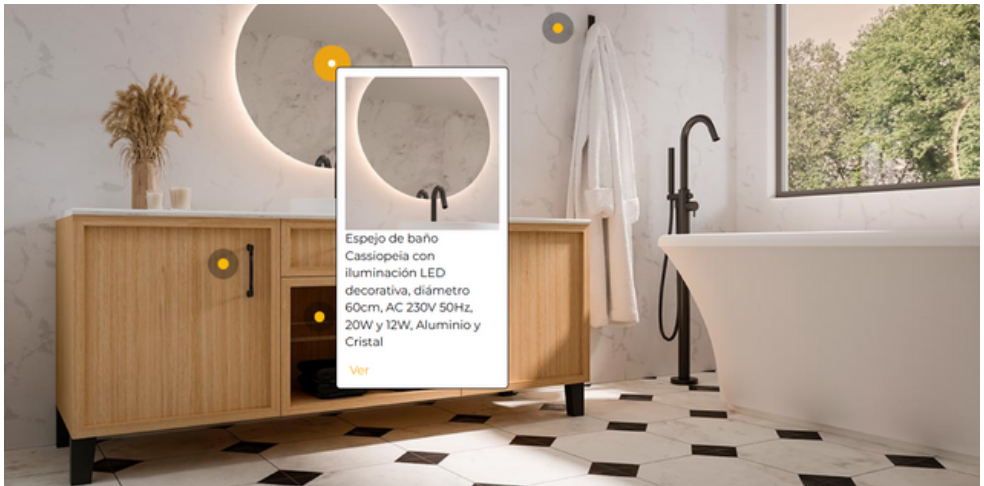
We provide concepts for bathrooms, kitchens, closets, and various other spaces, showcasing the products that comprise these solutions with a single click.

[Bathroom](#)

[Kitchen](#)

[Salon](#)

[Study](#)



[Nelson wall-mounted hangers](#)



[Suez furniture pull](#)



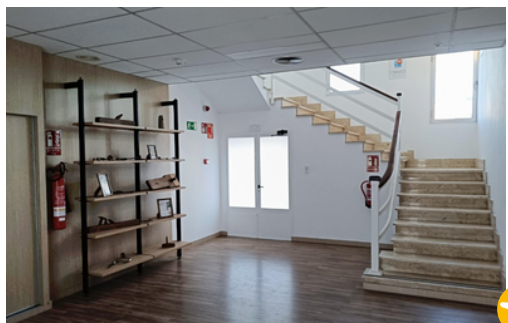
[EVO glass shelf bracket](#)



Ideas of our clients

The ZERO system is unequivocally the most efficient product utilized by our clients in their projects. Congratulations on all the applications you have launched!

Zero



Ideas of our clients

Concepts 3

Impressive Concepta installed by our client. The lighting significantly enhances the furniture.

[View more](#)



Kitchens and wardrobes

Accessories and lighting are utilized in various environments, crafting comprehensive spaces for diverse clientele.

[View more](#)





CURRENT EVENTS

CURRENT EVENTS



® SALONE INTERNAZIONALE
COMPONENTI, SEMILAVORATI E ACCESSORI
PER L'INDUSTRIA DEL MOBILE
INTERNATIONAL EXHIBITION OF COMPONENTS,
SEMIFINISHED PRODUCTS AND ACCESSORIES
FOR THE FURNITURE INDUSTRY
FIERA DI PORDENONE
14 - 17 OTTOBRE/OCTOBER 2025

We extend our heartfelt gratitude to everyone who visited our stand at the Sicam trade fair.

We present to you the video that encapsulates the essence of this event and underscores the attributes that our clients have esteemed: quality, variety, innovation, service, and competitiveness.

SICAM Guide 2025



CURRENT
EVENTS



UPCOMING TRADE FAIRS (MARS 2026)

We eagerly anticipate your presence next year at the KBB trade fairs in Birmingham, England, ORCAB in Nantes, France, or Medwood in Athens, Greece. Join us to explore the latest innovations.



**March 1-4,
Birmingham,
United Kingdom**



[EXPAND THE INFORMATION](#)



**March 18-19,
Nantes, France**



[EXPAND THE INFORMATION](#)



**March 27-30,
Athens, Greece**



[EXPAND THE INFORMATION](#)



EMUCA ONLINE TRAINING

We answer your questions.

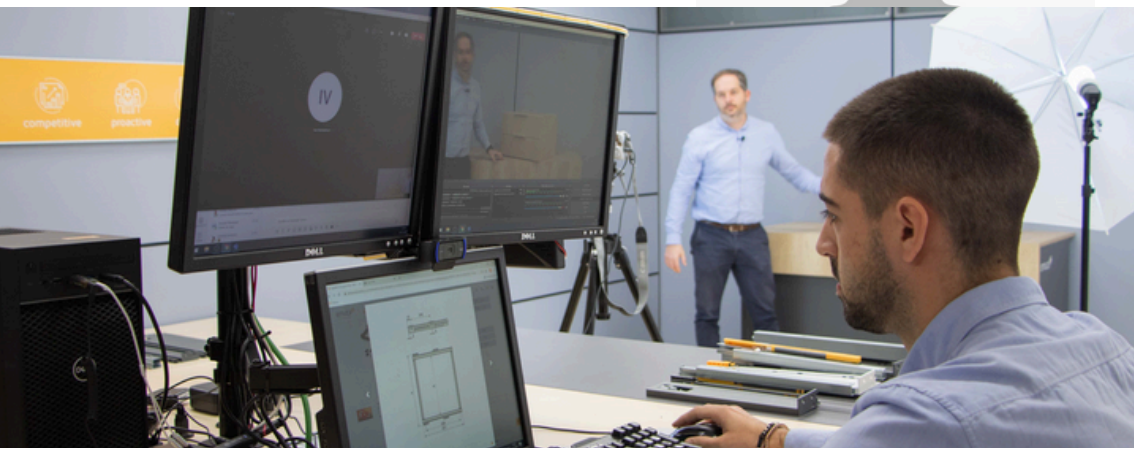
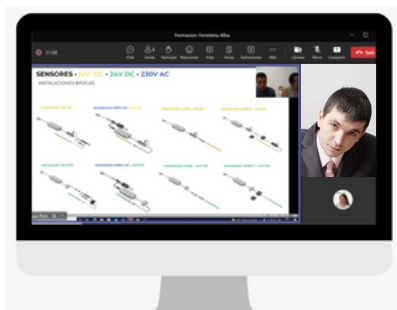


Remember that **we offer you training courses** or online meetings with our technical and commercial team.

At Emuca **we have a technical recording room** fully prepared for this type of training.

Do not hesitate to count on us for these types of proposals and ability to speed up the learning process in certain families.

**CONTACT YOUR SALES
REPRESENTATIVE**





www.emuca.com

Emuca S.R.L.

Via Messico, 80 • 35127 Padua (ITALY)
T. +39 049 8702800

Emuca Limited.

75 Springfield Road • Chelmsford • Essex • CM2 6JG
(UK)
T. +44 1268 530 674

Emuca S.A.

Pl. El Oliveral - c/H, 4 • P.O. Box 176
46394 Riba-Roja del Túria • Valencia (SPAIN)
T. +34 96 166 70 19

Emuca S.A.R.L.

Aubinière Park • 2 Avenue des Améthystes
44338 Nantes Cedex 03 (FRANCE)
T. +33 2 49 88 07 35

Emuca Limited.

Avenida da Liberdade, No. 36, 6th Floor • 1250-145
Lisbon (PORTUGAL)
T. +351 211 203 940

