

# MAGAZINE

ALL FOR THE FURNITURE

## ACCESSORIES

Discover solutions that transform every detail into value.

> APRIL 2026

PRODUCTS - NEWS - CURRENT EVENTS

emuca   
where creation begins

# Contents

## FEATURED PRODUCT

Kitchen and cupboard accessories that take your design to the next level.

## NEWS

Lighting, runners, and more. All the latest products can be found on our website.

## INSPIRATION

Get inspired by complete environments as well as product ideas applied by our clients.

## CURRENT EVENTS

We'll tell you about our participation in KBB and Orcab, in England and France.



# HARMONY

## Kitchen accessories

Order that moves with you

Designed to improve access and organisation in kitchen cabinets. They allow for complete removal of contents, facilitating visibility and daily use.

Ideal for low modules and corners, they make better use of interior space and turn hard-to-reach areas into functional spaces for your customers.

[Learn more](#)



# The complete range of accessories for your kitchens

Offer your customers a complete solution for creating functional and **well-organised kitchens**. With a wide variety of options, from pull-out elements to storage solutions and smart accessories, Harmony allows you to meet every space need, providing versatility, aesthetics, and that touch of practicality.



[View catalogue](#)



# QUARTZ

**Rotate, access, and organise:** the shoe rack that changes everything

Designed to maximise functionality and enhance the user experience, their durable, clean-lined, removable solutions facilitate access, optimise space, and add a premium finish to any project.

Awarded the 2026 Diamond Furniture Award, Quartz stands out for its intelligent design and superior quality.

[View the full range](#)



# Surprise your customers with a complete range wardrobe accessories

It's **one of the most comprehensive on the market**, with accessories to cover every need. It includes racks, side dividers, metal and wire drawer organisers, shoe racks, trouser racks, auxiliary trays, laundry baskets, multiple combination kits, and an elegant pull-out mirror. Everything is designed to bring order, functionality, and a **premium finish to any project.**

[View catalogue](#)



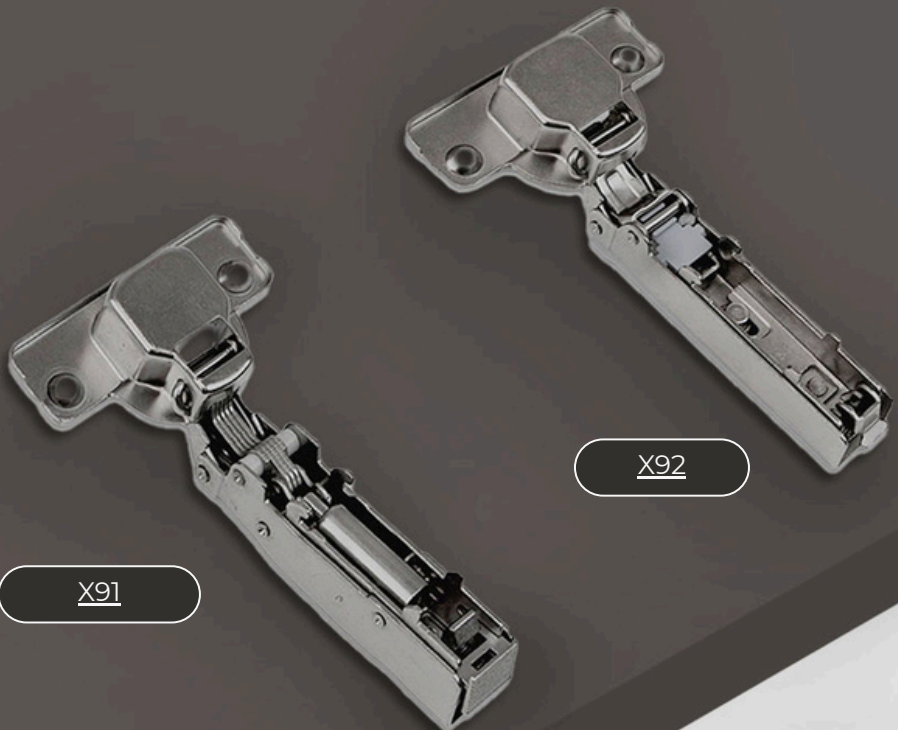
# Hinges: choose according to your project

Not all furniture requires the same thing. That's why our range of hinges adapts to every level of demand, combining more comprehensive solutions with more competitive options. Models like the X91 and X92 demonstrate this: while the X91 incorporates a spring in both opening and closing, providing added functionality, the X92 offers a simpler and more efficient solution, while maintaining excellent performance.

Both share key characteristics to guarantee a reliable and lasting result:

- Soft-close damper piston
- Automatic assembly system
- For doors 14 to 24 mm thick
- **Three-dimensional regulation**
- Depth adjustment using eccentric

A versatile range that adapts to every piece of furniture and every need.





# NEWS





# Syrma adjustable LED recessed floodlight

[See more](#)

Modern adjustable LED light fixture, a versatile and elegant solution for integrating lighting into furniture:

- **Minimalist longitudinal design, ideal for wardrobes, display cases, shelves or kitchens.**
- Efficient LED technology to reduce energy consumption.
- Rotating mechanism to direct the light and avoid glare.
- **Quick and easy assembly using included clips.**
- Operates on 24V DC (requires converter not included).
- 1.5m cable with Miniled connector for greater versatility.
- Made of aluminum and plastic with a very modern black finish.



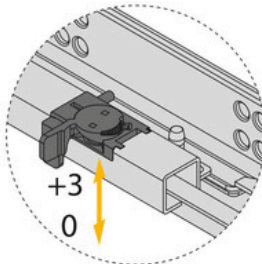
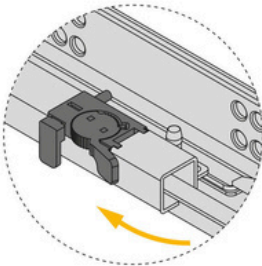
# Integrity drawer runners



The Integrity range offers concealed, partial-extension drawer runners designed for manufacturers seeking to optimise costs without compromising performance. Its front cam adjustment system allows for quick, precise, and **tool-free adjustments**, facilitating perfect drawer alignment during assembly. This balanced solution addresses market realities: not all furniture or projects require the same features, and Integrity delivers the necessary functionality with maximum efficiency.

- Concealed runners with partial extraction
- Smooth, quiet, and precise gliding.
- Soft-close system.
- Supplied by hands (left/right) in packs of 20 units.
- **Height adjustment from 0 to +3 mm via front cam without tools**
- Made of high-strength zinc-plated steel.
- Load capacity up to **25 kg**.
- Hidden design for a clean and modern aesthetic.
- Efficient solution for mass production and professional use.

[Learn more](#)



# Recycle Container with odor-proof lid



Recycle drawer bins allow you to integrate selective waste collection directly into your kitchen cabinetry, bringing order, discretion, and functionality to your daily life. **Available in different heights and capacities** from 6 to 15 liters, they adapt to various drawer configurations. They feature colored handles that make it easy to identify and remove waste, and a lid with a compartment for a neutralising tablet, helping to maintain a fresher and more pleasant environment.

[See more](#)



# In anthracite gray and now in black

In addition, we have expanded the Recycle range by incorporating the black version, an option that responds to current kitchen design trends and allows for greater coherence in projects with a more contemporary aesthetic.

[See more](#)



# Converter LED SMART Miniled (24V DC)

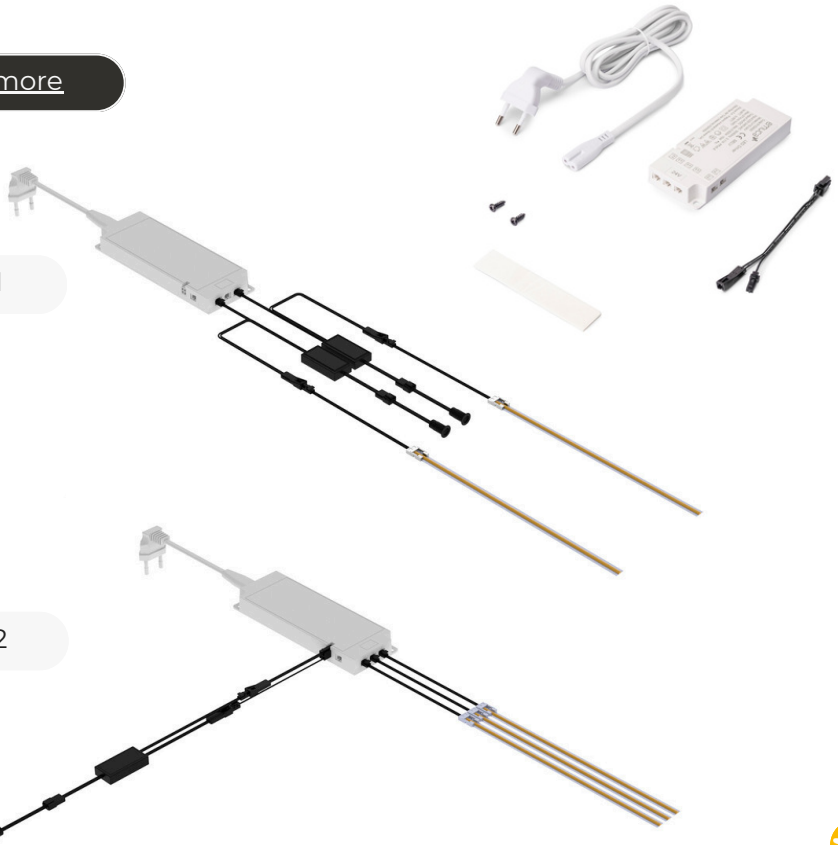
The SMART 24V DC converter is a versatile and efficient solution for LED installations in furniture, designed to simplify assembly and optimise system control. Its Plug&Play approach and the ability to centralise switching from a single sensor allow each project to be adapted to its specific needs, without oversizing the installation.

- Constant voltage 24V DC.
- Interchangeable cable adaptable to different markets.
- **Plug&Play** system compatible with Emuca 240V AC sensors.
- Control port for centralising power on/off.
- Elimination of power limitations when using SMART sensors.
- **6 Miniled outputs for multiple luminaires or independent installations.**
- Compact design and easy to hide.
- 2m power cable with angled type C plug.
- Protection against overheating and short circuits.
- Polycarbonate enclosure with class II protection.

[See more](#)

OPTION 1

OPTION 2

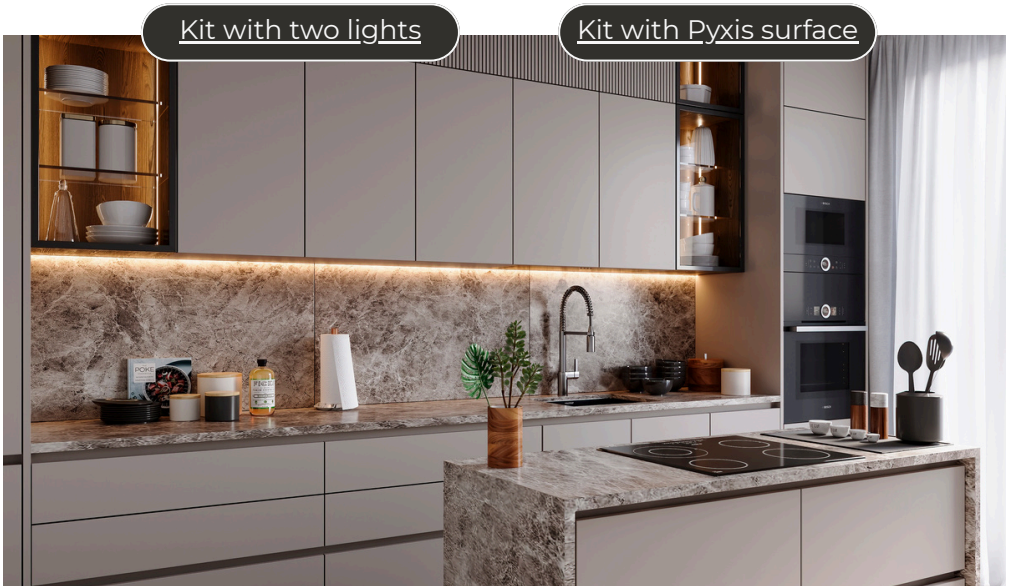




## Pyxis surface LED kit

A complete, ready-to-install solution that combines a luminaire, proximity sensor, and 24V DC smart converter to offer an efficient, functional, and hassle-free system. Its design allows for optimal lighting.

Uniform, with the possibility of custom cutting. Thanks to its Plug&Play system and sensor control with ON/OFF and dimmer function, it guarantees quick installation and a comfortable user experience.



# Catalogues for your projects

## Concepta 3

Optimise your spaces with solutions that combine design, functionality, and versatility. Discover the full potential of the Concepta system.

[View catalogue](#)



## Protone Drawer

Optimise your furniture with drawers that combine design, functionality, and efficiency. Discover all the options of the Protone Drawer.

[See brochure](#)



# INSPIRATION



# PROJECTS

We offer ideas for bathrooms, kitchens, closets and many more rooms, where we show you the products that make up these solutions in just one click.

[Bathroom](#)

[Kitchen](#)

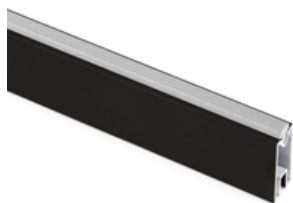
[Living room](#)

[Office](#)

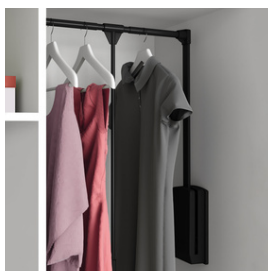


Lote de soportes para 5 estantes de madera para la estructura Zero, tableros no incluidos, Zamak, Pintado color negro texturizado

[Ver](#)



[Luxe rectangular wardrobe rail for Zero frame](#)



[Hang fold-down wardrobe hanger](#)



[Lot of supports for 5 wooden shelves for the Zero structure](#)

# Ideas from our clients

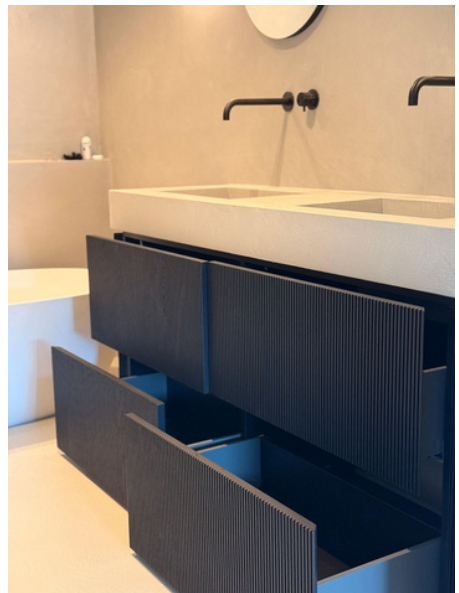
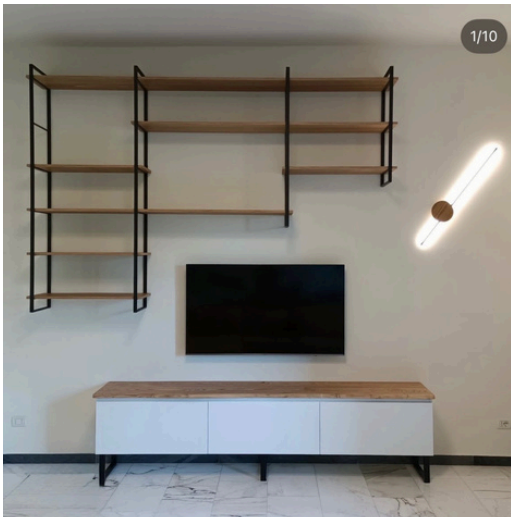
From the ZERO system in contract projects in Milan, to the Vertex drawer in professional carpentry bathrooms, the LADER structure for the home or the liftable beds, a versatile range designed to adapt to all types of projects and professionals.

Zero  
Structure

Mechanisms  
liftable

Lader  
Shelving

Drawer  
Vertex

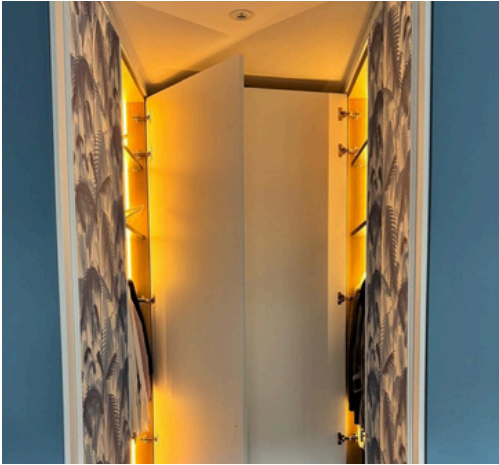


# Lighting Solutions

LED lighting is making all the difference in furniture design today, adding both functional and aesthetic value. With solutions like LED strips, Neonlynx, sensors, and SMART systems, our clients create more attractive, efficient spaces with a greater environmental impact.

[Lighting catalogue](#)

[Web Lighting Section](#)

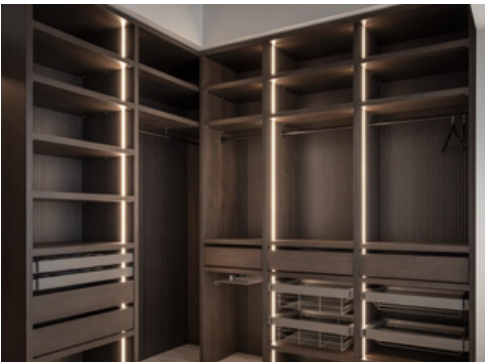


# Wardrobe solutions

We want our customers' project applications to inspire you with everything you need to create functional and organised spaces, from accessories and drawers to lighting systems and complements.

[Quartz Catalogue](#)

[Web Wardrobes Section](#)



# PRESENT



# Participation in international trade fairs



We would like to thank you for visiting us at the KBB trade fair in Birmingham and the ORCAB trade fair in Nantes. It was a resounding success and a true pleasure to share our latest products with you in two markets that are so important to us.

One of the product ranges that has generated the most interest has been lighting, further solidifying our position as leaders in this product category.



# Salone del Mobile. Milano

21\_26 Aprile 2026

Salone del Mobile. Milano



Salone del Mobile Milano once again turns the city into **the epicenter of design and innovation**. Considered the largest furniture fair in Europe, it's where the trends that will shape the future of interior design, materials, and home solutions are born.

As every year, we'll be there to experience it firsthand and **bring you a selection of the most relevant highlights**: new products, ideas, concepts, and solutions that will define 2027. In the next issue, you'll discover everything we've seen, so stay tuned — you won't want to miss it.

Fair info

Get your ticket



# EMUCA ONLINE TRAINING

We answer your questions.

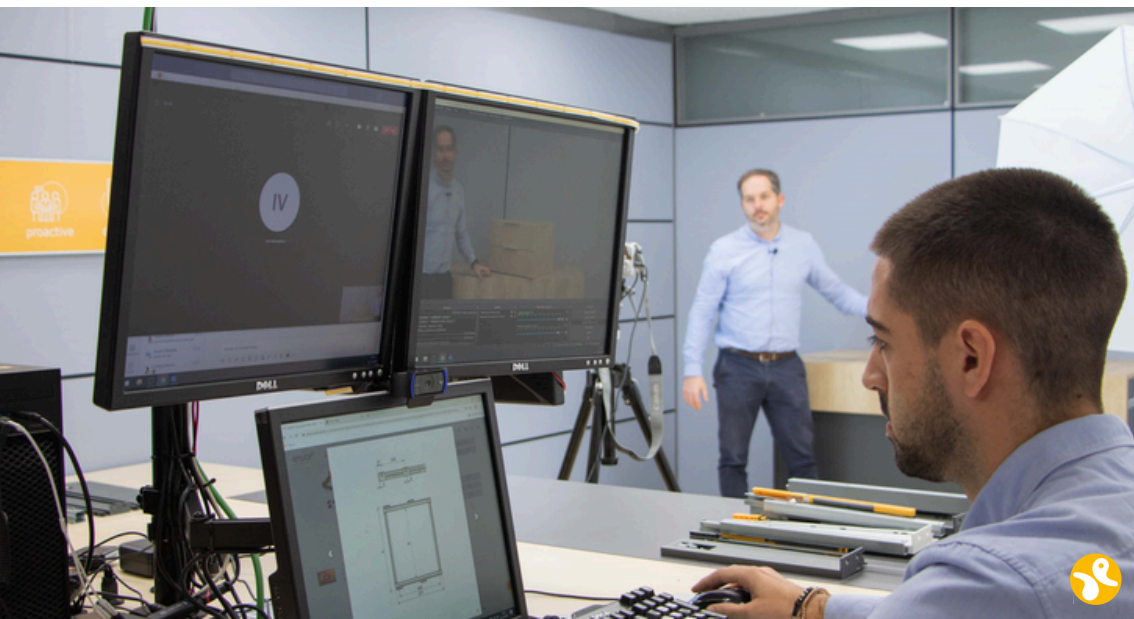
Remember that **we offer you training courses** or online meetings with our technical and commercial team.

At Emuca **we have a technical recording room** fully prepared for this type of training.

**Do not hesitate to count on us for these types of proposals** and ability to speed up the learning process in certain families.



Contact your sales representative





emuca

[www.emuca.com](http://www.emuca.com)

**Emuca S.R.L.**

Via Messico, 80 • 35127 Padua (ITALY) T. +39 049 8702 800

**Emuca Ltd.**

75 Springfield Road • Chelmsford • Essex • CM2 6JG (UK)  
T. +44 1268 530 674

**Emuca S.A.**

Pl. El Oliveral - c/H, 4 • P.O. Box 176  
46394 Ribba-Roja del Túria • Valencia (SPAIN) T. +34 96 166 70 19

**Emuca S.A.R.L.**

Aubinière Park • 2 Avenue des Améthystes  
44338 Nantes Cedex 03 (FRANCE) T. +33 2 49 88 07 35

**Emuca Ltda.**

Avenida da Liberdade nº 36, 6º • 1250-145 Lisbon  
(PORTUGAL) T. +351 211 203 940

